

Split Core Current Transformer

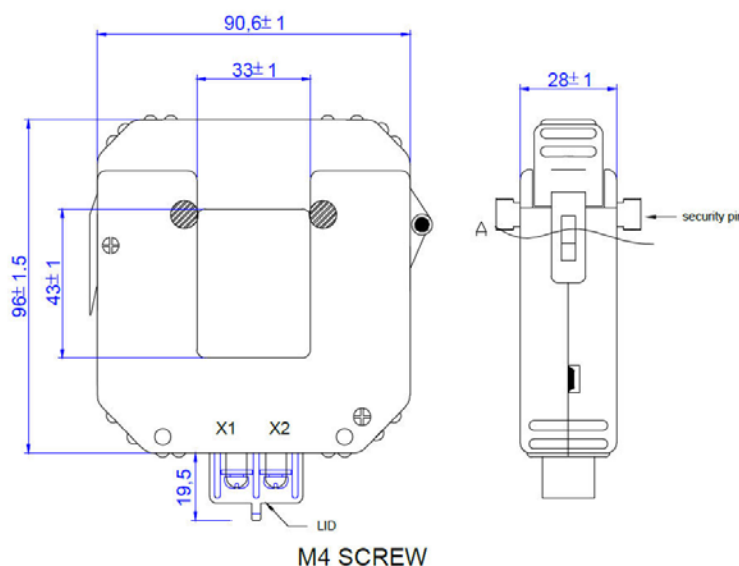
The SDK40-S Series are split-core current transformers. The CT can be mounted to existing panels, such as control centers or load centers, to measure or monitor wattage. These CTs can be mounted without removing existing cables for easier installation



Electrical Specifications

MODEL	INPUT CURRENT	AVAILABLE OUTPUT
SDK40-100S	100A	CURRENT OUTPUTS@ 20mA, 40mA, 50mA, 100mA, 1A, 5A
SDK40-200S	200A	
SDK40-300S	300A	
SDK40-400S	400A	VOLTAGE OUTPUTS@ 0.25V, 0.33V, 0.5V, 1V, 2V
SDK40-500S	500A	
SDK40-600S	600A	

Mechanical Dimensions in mm

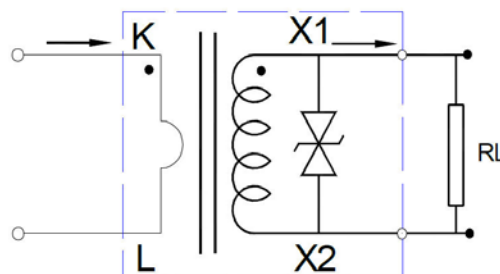


APPLICATIONS

- Energy and sub-metering products
- Electrical load monitoring
- Network equipment
- Instruments and sensors
- Control systems
- Go GREEN initiatives

SPECIFICATIONS

- Standard Input Current 10-600A
- Frequency 50Hz — 400Hz
- Standard accuracy 0.5, 1
- Operating Temp. -40°C to +70°C
- Storage Temp. -45°C to +85 °C
- ANSI C57.13 and IEC60044-1 Standards
- Approximate weight 500g



note:

1. Primary current direction from K to L
2. Secondary current directions from X1 to X2
3. RL: Output load resistance

CAUTION

Before installation, safety precautions must be followed by licensed professional. Never energize primary unless short circuited terminals or burden connected to secondary.